



# GAT MONTHLY MEMBERSHIP PROGRESS REPORT

Results as of: 3/31/2023

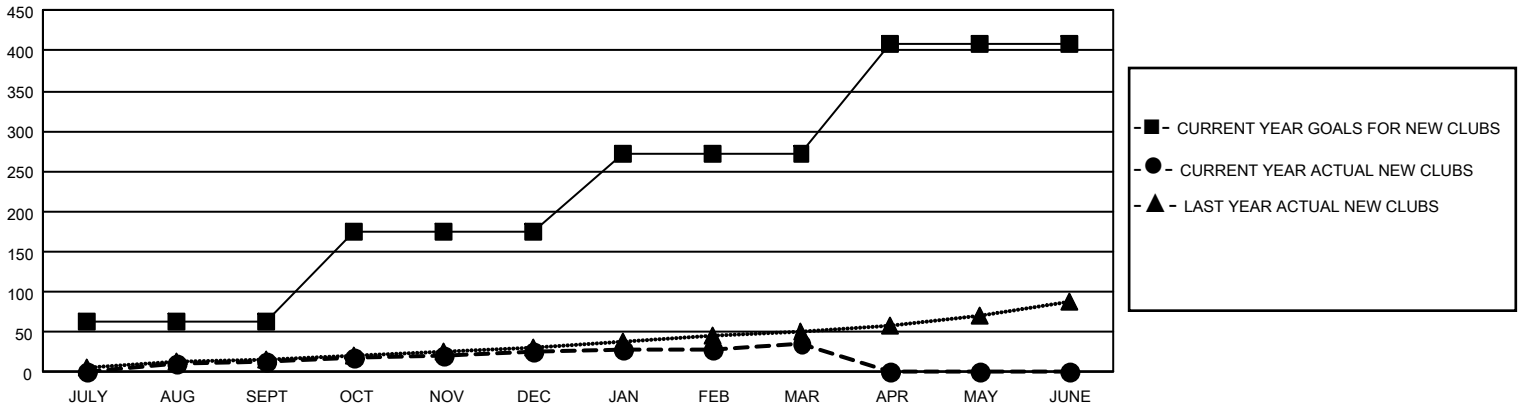
## GAT Constitutional Area 1

REPORT DOES NOT INCLUDE CLUBS IN UNDISTRICTED AREAS.

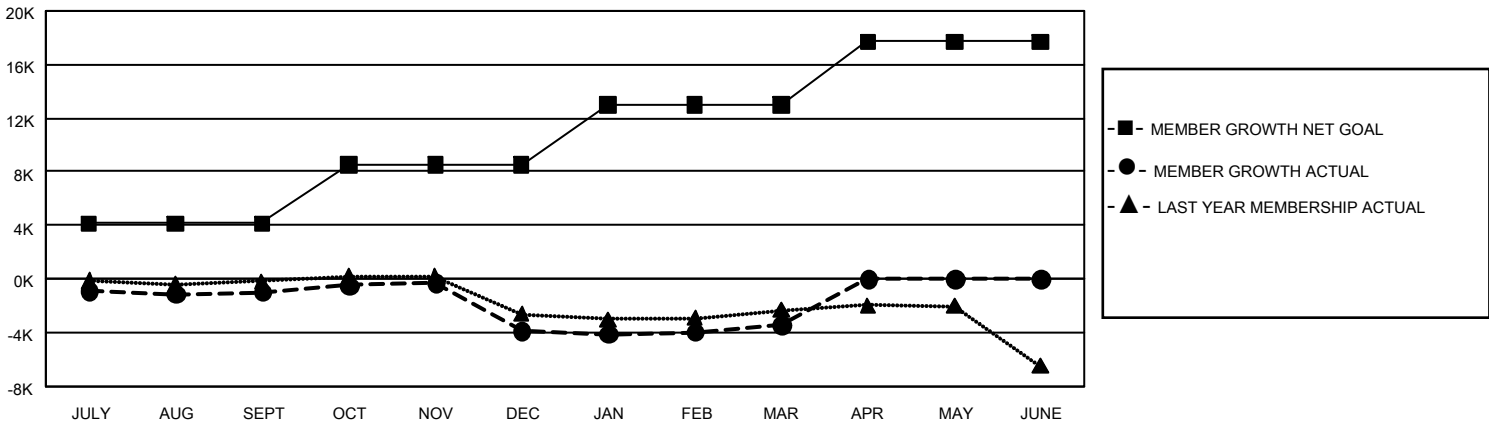
Clubs			
RESULTS FOR 2022-2023			
QUARTER	NEW CLUB GOAL	NEW CLUBS	DROPPED CLUBS
JULY/AUG/SEPT	192	14	64
OCT/NOV/DEC	330	11	111
JAN/FEB/MAR	294	10	45
APR/MAY/JUNE	411	0	0

Members			
RESULTS FOR 2022-2023			
QUARTER	MEMBER GROWTH NET GOAL	MEMBER GROWTH ACTUAL	DROPPED MEMBERS ACTUAL (including transfers)
JULY/AUG/SEPT	4133	7,255	7,310
OCT/NOV/DEC	4409	7,153	9,400
JAN/FEB/MAR	4451	8,147	6,704
APR/MAY/JUNE	4727	0	0

GOALS AND ACTUAL NEW CLUBS CUMULATIVE



GOALS AND ACTUAL MEMBERS CUMULATIVE



<b>DROPPED CLUBS: 220</b>	5,450 CLUBS OF 10,382 ADDED 1 OR MORE NEW MEMBERS	<b>GENDER DISTRIBUTION</b>
<b>DROPPED MEMBERS</b>	<a href="#">CLICK HERE FOR CUMULATIVE MEMBERSHIP DATA</a>	MALE 172,953 (64.06%)
DECEASED 3,393		FEMALE 96,887 (35.89%)
CLUB CANCELLED 1,432		NON BINARY 10 (0.00%)
OTHER 18,596		PREFER NOT TO ANSWER 115 (0.04%)
<b>TOTAL 23,421</b>		TOTAL FAMILY UNIT MEMBERS 52,455
		FAMILY MEMBERS PAYING HALF DUES 26,988